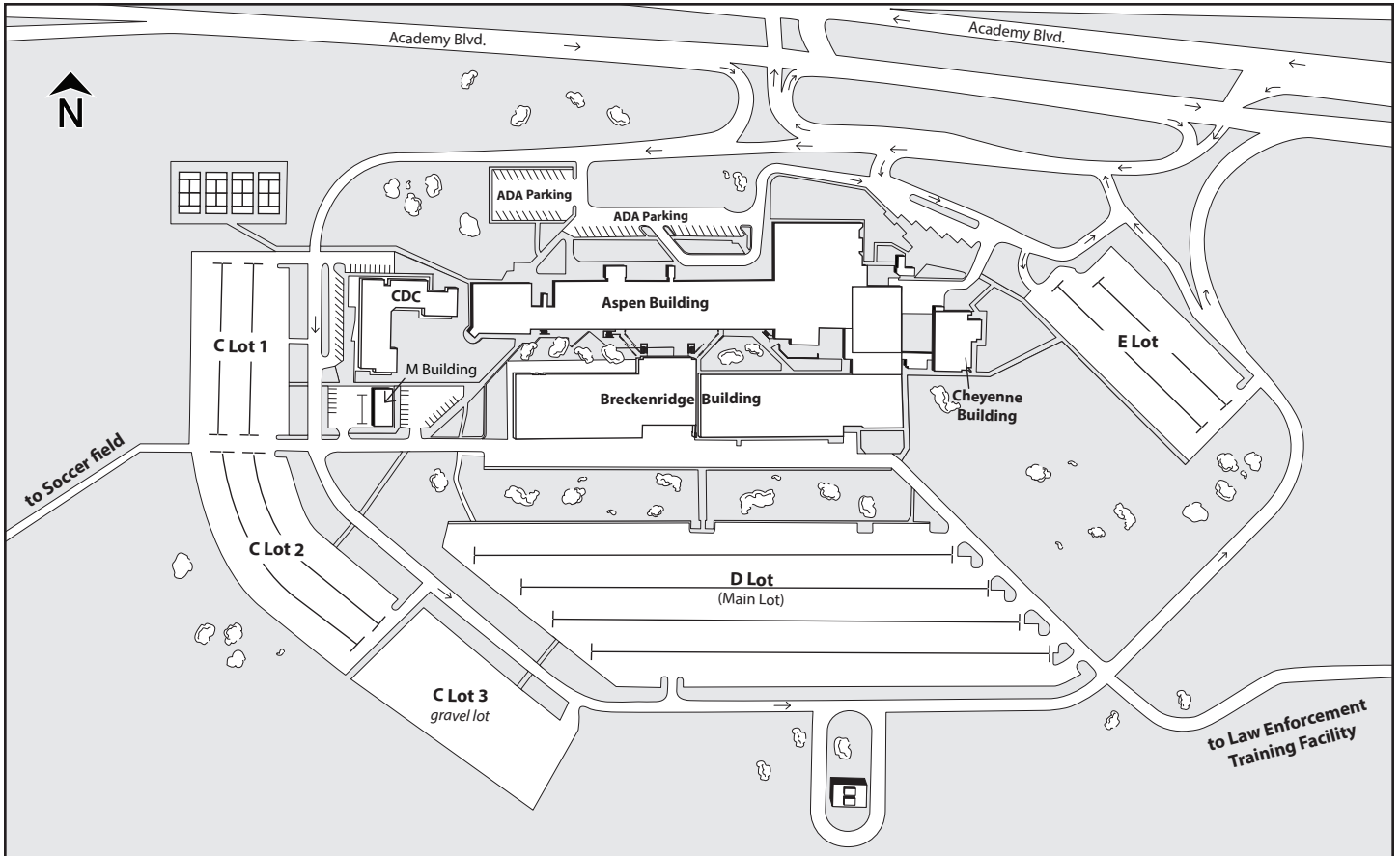


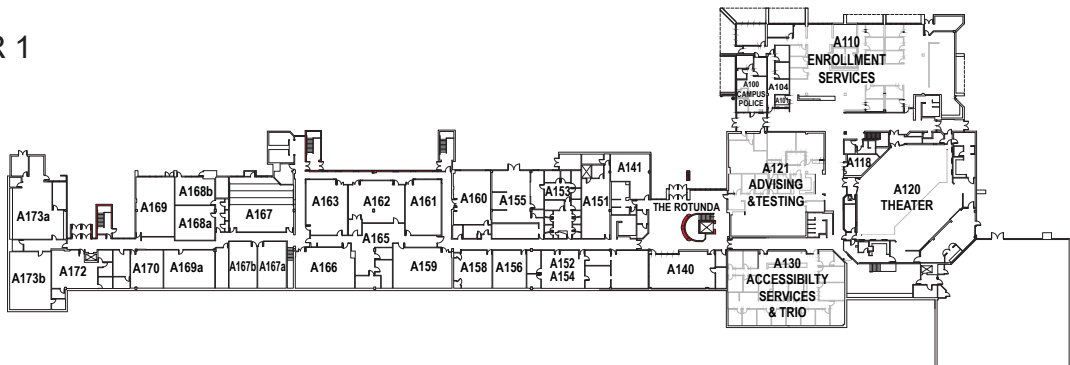


## CENTENNIAL CAMPUS MAP

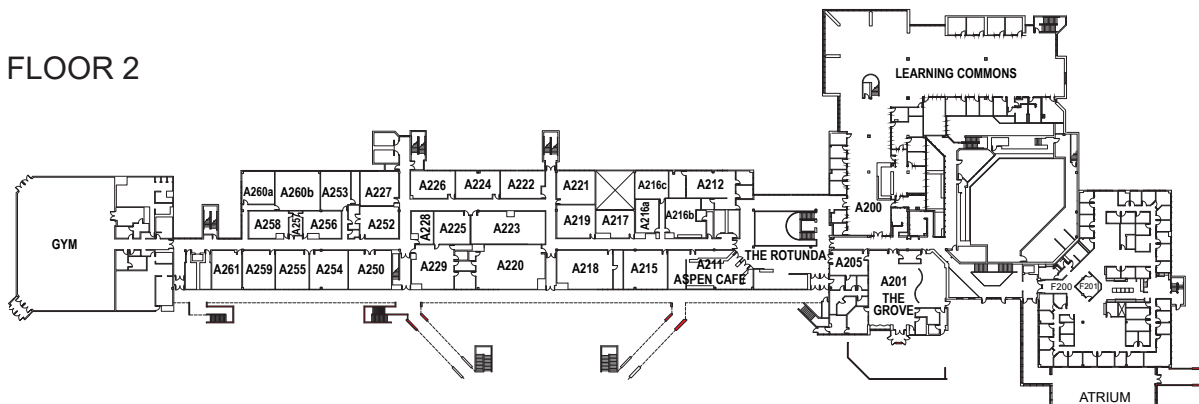


## ASPEN BUILDING

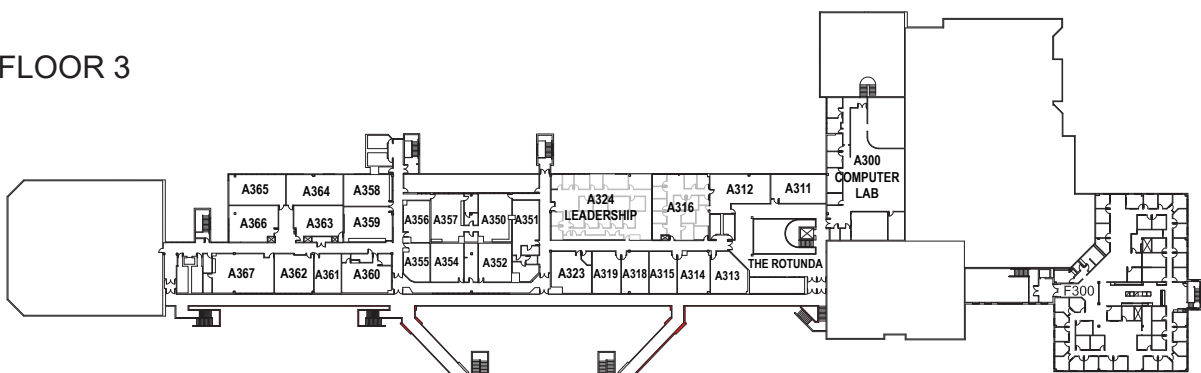
### FLOOR 1



### FLOOR 2



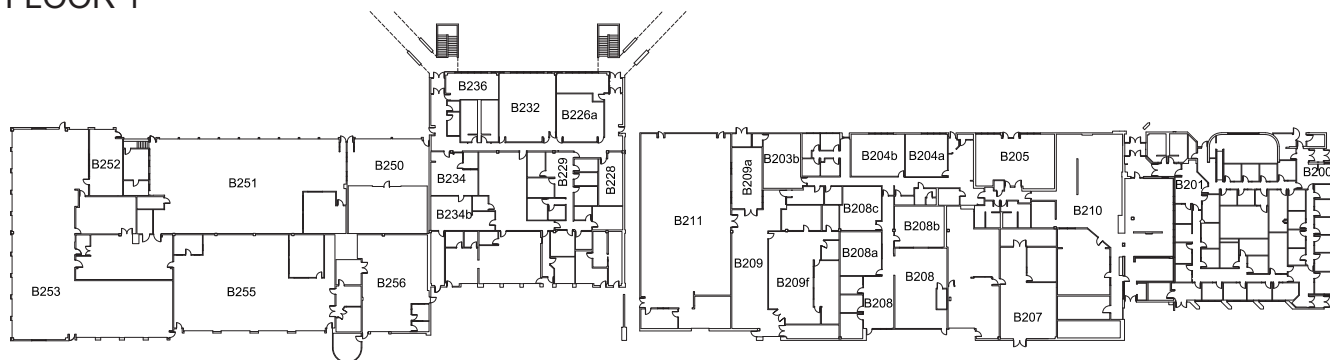
### FLOOR 3



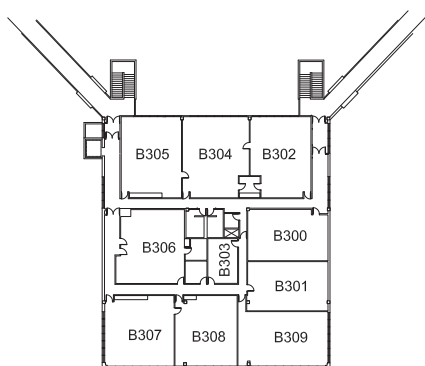


## BRECKENRIDGE BUILDING

### FLOOR 1

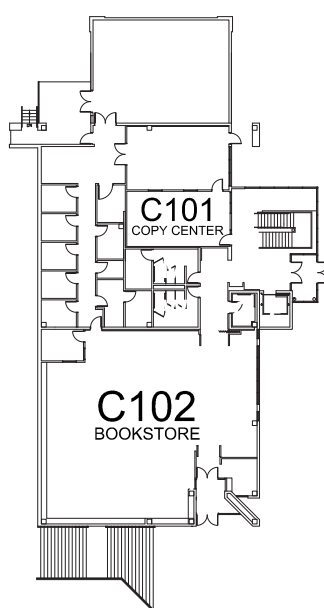


### FLOOR 2

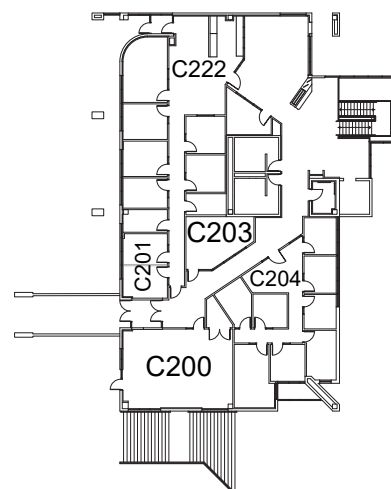


## CHEYENNE BUILDING

### FLOOR 1



### FLOOR 2



### DIRECTORY

A = Aspen Building	100 level = 1st floor
B = Breckenridge Building	200 level = 2nd floor
C = Cheyenne Building	300 level = 3rd floor
F = Faculty Building	
CDC = Child Development Center	

#### Student Services:

ACCESSibility & TRIO.....	A-130
Advising & Testing.....	A-121
Aspen Market Cafe .....	A-211
Bookstore.....	C-102
Campus Police.....	A-100
Cashier .....	A-101
Centennial State Conference Room .....	C-200
Computer Labs.....	A-300
Copy Center .....	C-101
Counseling Center .....	C-201b
eLearning .....	A-229

#### Enrollment Services

• Enrollment	A-110
• Financial Aid	
• Records	
• Recruitment	
• Student Accounts	
Fitness Center.....	A-262
The Grove.....	A-201
High School Programs.....	A-220
The Hub.....	C-203
Learning Commons .....	A-200
Military & Veterans Programs .....	C-222
Pikes Peak Conference Room.....	A-140
Student Government.....	A-204
Student Life.....	A-205

#### Student Success Center..... A-316

- Career and Retention Services
- Center for Diversity, Equity and Inclusion
- COSI Coaches
- Dakota Promise Coaches
- High Impact Practices

Testing Center .....	A-121
Theater .....	A-120
Veterans Affairs / Veterans Upward Bound .....	C-222
Workforce Development.....	A-223

#### Instructional Divisions:

Business, Public Service, & Social Sciences.....	F-300
Communication, Humanities, & Technical Studies .....	F-300
Health & Sciences .....	F-300
Math & English .....	F-200
English Language Institute.....	F-200

#### Support Services:

Facilities.....	B-229
Human Resource Services .....	B-200
ITSS B-201	
Leadership Suite .....	A-324
President's Office .....	A-324
Procurement (Purchasing).....	B-229